

A blue silhouette of a cityscape with various buildings, trees, and a person on a bicycle, located at the top of the slide.

GETTING STATES ON BOARD:

Reaching California's Climate Goals through Smart Growth

Elizabeth Grassi, Senior Analyst and Planner, Strategic Growth Council



CALIFORNIA
STRATEGIC
GROWTH
COUNCIL

A blue silhouette of a rural landscape with houses, trees, a tractor, and silos, located at the bottom of the slide.

GLOBAL WARMING

\$4.43 BILLION IN AUCTION REVENUES
OVER A FIVE-YEAR PERIOD



Revised Proposed Short-Lived Climate Pollutant Reduction Strategy

November 2016

California Environmental Protection Agency
Air Resources Board

THE 2017 CLIMATE CHANGE SCOPING PLAN UPDATE
THE PROPOSED STRATEGY FOR ACHIEVING CALIFORNIA'S 2050 GREENHOUSE GAS TARGET

May 2014

First Update to the Climate Change Scoping Plan
BUILDING ON THE FRAMEWORK PURSUANT TO AB 32 THE CLIMATE CHANGE WARMING SOLUTIONS ACT OF 2006

JANUARY 30, 2017
California Air Resources Board



CALIFORNIA CLIMATE STRATEGY

An Integrated Plan for Addressing Climate Change

VISION

Reducing Greenhouse Gas Emissions to 40% Below 1990 Levels by 2030

GOALS

 50% reduction in petroleum use in vehicles 50% renewable electricity	 50% reduction in petroleum use in vehicles Double energy efficiency savings at existing buildings	 50% reduction in petroleum use in vehicles Double energy efficiency savings at existing buildings	 Carbon sequestration in the land base Reduce short-lived climate pollutants	 Carbon sequestration in the land base Reduce short-lived climate pollutants	 Safeguard California
---	--	--	--	--	---------------------------------

UNDER 2°

Subnational Global Climate Leadership Memorandum of Understanding

CLIMATE CONSCIENCE CALIFORNIA

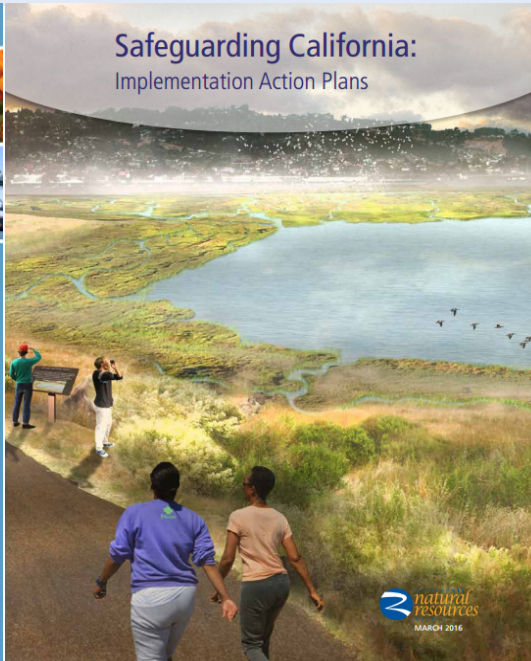
February 2015



Climate Change Research Plan for California



Safeguarding California: Implementation Action Plans



natural resources
MARCH 2015

Safeguarding California: Reducing Climate Risk

An update to the 2009 California Climate Adaptation Strategy
Public Draft

Our Changing Climate 2012

Vulnerability & Adaptation to the Increasing Risks from Climate Change in California

2009 CALIFORNIA CLIMATE ADAPTATION STRATEGY

A Report to the Governor of the State of California in Response to Executive Order S-13-2009



CA.GOV CALIFORNIA CLIMATE CHANGE

Search

Home State Local Business Science Partnerships Contact Us


Local Roles

Local governments have important roles to play in efforts to reduce greenhouse gas emissions. Local governments are at the forefront of efforts to adapt to the ongoing and anticipated impacts of climate change.



1 2 3 4 5 II


CALIFORNIA ADAPTATION PLANNING GUIDE



PLANNING FOR ADAPTIVE COMMUNITIES

CEMMA CIRM CIRM FEMA


CALIFORNIA ADAPTATION PLANNING GUIDE



DEFINING LOCAL & REGIONAL IMPACTS

CEMMA CIRM CIRM FEMA

CALIFORNIA ADAPTATION PLANNING GUIDE



IDENTIFYING ADAPTATION STRATEGIES

CEMMA CIRM CIRM FEMA

California Climate Strategy

An Integrated Plan for Addressing Climate Change

Office of the Governor
Edmund G. Brown Jr.
Visit his website



Popular Links



A blue silhouette of a cityscape with various buildings, trees, and people riding bicycles, located at the top of the page.

State Actions

A blue silhouette of a rural landscape with houses, trees, a tractor, and silos, located at the bottom of the page.

CALIFORNIA
STRATEGIC
GROWTH
COUNCIL

Governor's Directives *(EXECUTIVE ORDERS)*

B-30-15 CLIMATE CHANGE MITIGATION AND ADAPTATION

- Established GHG emissions reduction targets below 1990 levels: **40% by 2030, 80% by 2050**
- Directs the state's to consider resilience to climate change in all planning and investments using five adaptation principles

B-16-12 FACILITATES THE RAPID COMMERCIALIZATION OF ZERO EMISSIONS VEHICLES

B-18-12 GREEN BUILDINGS—REDUCED GHG EMISSIONS, ENERGY EFFICIENCY AND CONSTRUCTING ZERO NET ENERGY FACILITIES



Legislative Direction (2015-16 Session)

ASSEMBLY BILL 1482: Directs agencies to prepare for and respond to climate change impacts; develop adaptation policies that protect people, places, and water from climate impacts; and be consistent with the State's climate adaptation strategy.

ASSEMBLY BILL 2722: Allocates \$140 million for **Transformative Climate Communities**, awarding grants to disadvantaged communities for neighborhood-level community activities resulting in measurable greenhouse gas emissions reductions, while benefiting the health, economy and environment of its residents.

ASSEMBLY BILL 2800: Directs agencies to take current and future climate change impacts into account in all infrastructure planning, design, building, operating, maintenance and investments. Creates the **Climate-Safe Infrastructure Working Group** to examine and integrate scientific data into the state's efforts to engineer, oversee, invest in, design, and construct projects.

SENATE BILL 32: Updates the **California Global Warming Solutions Act of 2006**, requiring the Air Resources Board to ensure that statewide greenhouse gas emissions are reduced to at least 40% below 1990 levels by 2030.

SENATE BILL 246: Establishes the **Integrated Climate Adaptation and Resiliency Program**, coordinating regional and local efforts with the State's climate adaptation strategies. Requires fixed updates to the California Adaptation Planning Guide and the Safeguarding California Plan.

SENATE BILL 350: Clean Energy and Pollution Reduction Act of 2015. Establishes new clean energy, clean air and greenhouse gas reduction goals for 2030 and beyond.



Climate Policies/Initiatives


California's Vibrant Communities and Landscapes

Recognizes the inherently difficulty in making land use decisions.


Considers the conflicts, tradeoffs, and balancing the needs of constituencies.

Considers the role of land use within the context of California's climate change policy.

September 2016

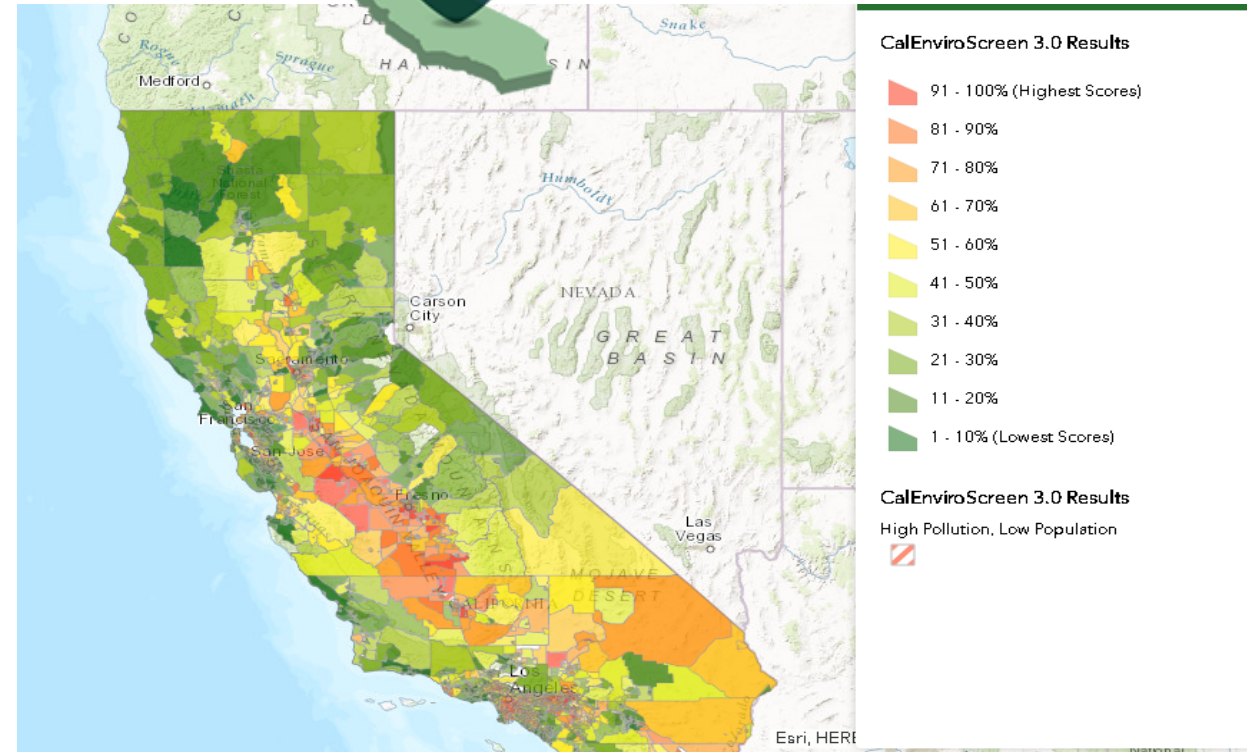


Vibrant Communities and Landscapes
A Vision for California in 2050
Draft for Comment & Discussion



Logos: cdfa, CHHS, CALIFORNIA STRATEGIC GROWTH COUNCIL, natural resources, CalEPA, BCSH, CalSTA

CalEnviroScreen



As part of CalEPA's environmental justice program, CalEnviroScreen was developed for state agencies and departments to identify communities that face multiple burdens of pollution and socioeconomic disadvantage.

Funding Opportunities

CALIFORNIA CLIMATE INITIATIVES

Active Transportation
Affordable Housing
Agricultural Energy / Operational Efficiency
Alternative and Renewable Fuels
Dairy Methane
Energy Efficiency
Enhanced Fleet Modernization
Forest Health
Healthy Soils
High Speed Trail
Hydroelectric Renewable Energy Turbines
Low Carbon Transit and Intercity Rail

Low Income Weatherization
Sustainable Agricultural Conservation
Technical Assistance / Disadvantaged Communities
Transformative Climate Communities
Urban and Community Forestry
Urban Forests
Urban Greening
Waste Diversion
Water-Energy Efficiency Program
Wetlands and Watershed
Woodsmoke Reduction
Zero Emissions Vehicle Rebates

CALIFORNIA CLEAN ENERGY JOBS

Local Educational Agency energy efficiency and clean energy projects
California Community College energy efficiency and clean energy projects
Conservation Assistance Act - Education Loan and Technical Assistance Grant Program
Workforce Development Training for Veteran's and Disadvantaged Youth
California Conservation Corps conducted energy surveys and other energy conservation-related activities for public schools

WATER QUALITY, SUPPLY, AND INFRASTRUCTURE

Delta Water Quality and Drinking Water
Ecosystem Restoration
Groundwater Sustainability
Integrated Regional Water Management

Stormwater Resource Plans and Projects
Wastewater
Water recycling
Watershed Restoration

SUSTAINABLE COMMUNITIES

Land Use Planning *Urban Greening* *Urban Forestry*



Tools

US EPA's Location Efficiency Calculator

Assesses travel behavior, GHG emissions, and related environmental impacts that can occur at different facility locations.

Recognizes the significance of employee commutes as part of a facility's environmental footprint.

Generates discussions on the role of facility siting in promoting choice, convenience and reduced energy use.



cal-adapt

Exploring California's Climate Change Research

Cal-Adapt provides a view of how climate change might affect California

Here you will find tools, climate data, and resources to conduct research, develop adaptation plans and build applications

Through Cal-Adapt, all Californians can access the wealth of climate data and information produced by the scientific and research communities about our state. It provides users with visualization tools, access data, and community sharing that offers a view of how climate change might affect California at the local level.

This searchable database of grants, rebates and incentives helps fund sustainable projects, from one portal, combing the internet for funding opportunities to advance the State's sustainability objectives.

GREENING STATE BUILDINGS FOR A BRIGHTER FUTURE

State departments across California are adopting a green way of thinking about their facility operations. Under the leadership of Governor Edmund G. Brown Jr., California has undertaken an ambitious effort to green the state's buildings and save taxpayer dollars in the process



PERCENT CHANGE IN GRID ENERGY USAGE BY DEPARTMENT FROM 2005 TO 2015



LARGEST USERS

Grid Energy Consumption

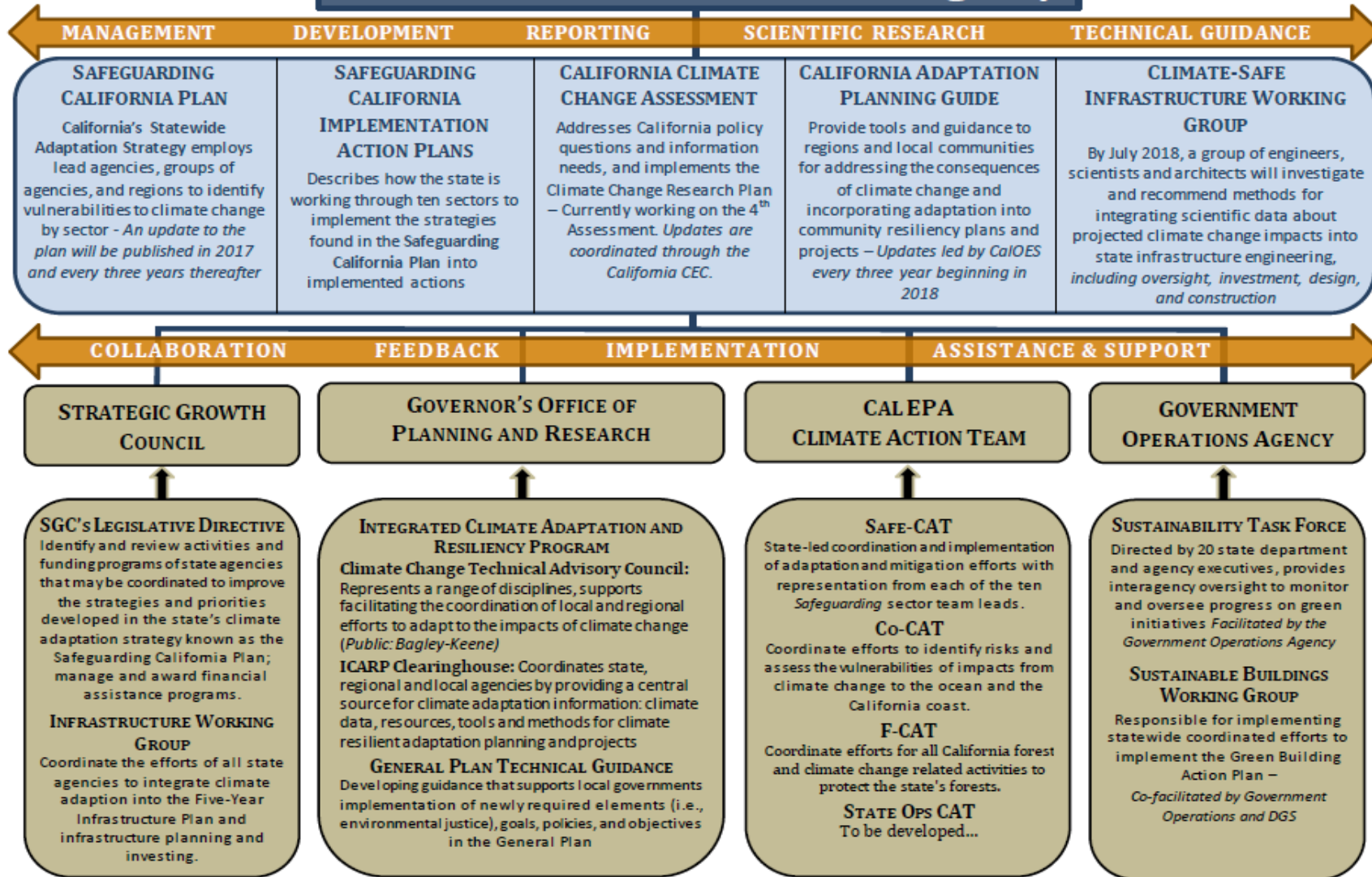


CALIFORNIA STRATEGIC GROWTH COUNCIL

CALIFORNIA'S APPROACH TO ADAPTING TO THE IMPACTS OF CLIMATE CHANGE

California Natural Resources Agency

STRUCTURE



A blue silhouette of a cityscape with various buildings, trees, and a person on a bicycle, located at the top of the page.

FOR MORE INFORMATION CONTACT:

LIZ GRASSI

(916) 327-5362

Elizabeth.Grassi@SGC.CA.GOV



CALIFORNIA
STRATEGIC
GROWTH
COUNCIL

A blue silhouette of a rural landscape with houses, trees, a tractor, and silos, located at the bottom of the page.